

# PAYETTE

**Architect**  
 Payette Associates Inc.  
 290 Congress Street, Fifth Floor  
 Boston, MA 02210-1005  
 Tel: 617-895-1000  
 Fax: 617-895-1002

**Landscaper**  
 Payette Associates, Inc.  
 290 Congress St  
 Fifth Floor  
 Boston, MA 02210  
 Tel: 617-895-1000

**Civil Engineer**  
 Milone & MacBroom  
 1656, 99 Realty Dr  
 Cheshire, CT 06410  
 Tel: 203-271-1773

**MEP/FP Engineer**  
 BuroHappold  
 11 Beacon St, Ste 400  
 Boston, MA 02108  
 Tel: 617-419-2284

**Structural Engineer**  
 Silman  
 111 Devonshire St  
 Boston, MA 02109  
 Tel: 617-695-6700

**Lighting**  
 Available Light  
 10 Derby Square # 3  
 Salem, MA 01970  
 Tel: 978-744-6800

**Acoustic / AV**  
 Acentech  
 33 Moulton Street  
 Cambridge, MA 02138  
 Tel: 617-499-8000

**Elevator**  
 Lerch Bates  
 303 Wyman Street  
 Suite 300  
 Waltham, MA 02451  
 Tel: 617-763-5822

**Envelope**  
 Front  
 20 Jay Street #920  
 Brooklyn, NY 11201  
 Tel: 212-242-2253

**Wind / Air Quality**  
 RWDI  
 600 Southgate Drive,  
 Guelph  
 Ontario, Canada N1G  
 4P6  
 Tel: 1-519-823-1311

#	DATE	DESCRIPTION
11/02/18	DESIGN DEVELOPMENT	

11/02/18 DESIGN DEVELOPMENT

#	DATE	DESCRIPTION

## NATIONAL COAST GUARD MUSEUM

### DESIGN DEVELOPMENT

### LEVEL 0 LIGHTING LAYOUT

Drawing Scale	As indicated
Project Number	16201.00
Date Issued	11/02/18

# AL000

**General Notes:**

- See Architectural drawings for all mounting details and corresponding specifications. Lighting fixture manufacturer to approve mounting details prior to final order.
- Contractor shall verify that all lighting equipment specified, in its application on this project, complies with all applicable national and local codes, ordinances, regulations and jurisdictions prior to ordering any equipment.
- Do not scale electrical drawing for exact location of the lighting fixtures. In general, the architectural reflected ceiling plans indicate the proper location of lighting fixtures.
- Written dimensions on drawings shall have authority over scaled measurements. Contractors and manufacturers shall verify and be responsible for all dimensions and conditions on the job and inform Available Light of all variations from drawings prior to performing the work.
- All 40mm schedule 40 black steel pipe must be permanently secured so that no deflection or rotation occurs when fixtures are mounted at varying angles.
- All conduit must be permanently secured so that no deflection or rotation occurs when fixtures are mounted at varying angles.
- All C-clamp and unsized mounted light fixtures will employ safety cables supplied by the appropriate fixture manufacturer.
- For all remote location dimmers, the electrical contractor shall provide separate neutrals for each dimming circuit (i.e. no common neutrals).
- A line item price for the cost to provide and install each lighting fixture type is required.

All public elevators with integral circulation light to deliver no less than 100 lux across each tread. See escalator manufacturer detail drawings.

All public elevators with integral circulation light to deliver no less than 100 lux across floor of cab. See escalator manufacturer detail drawings.

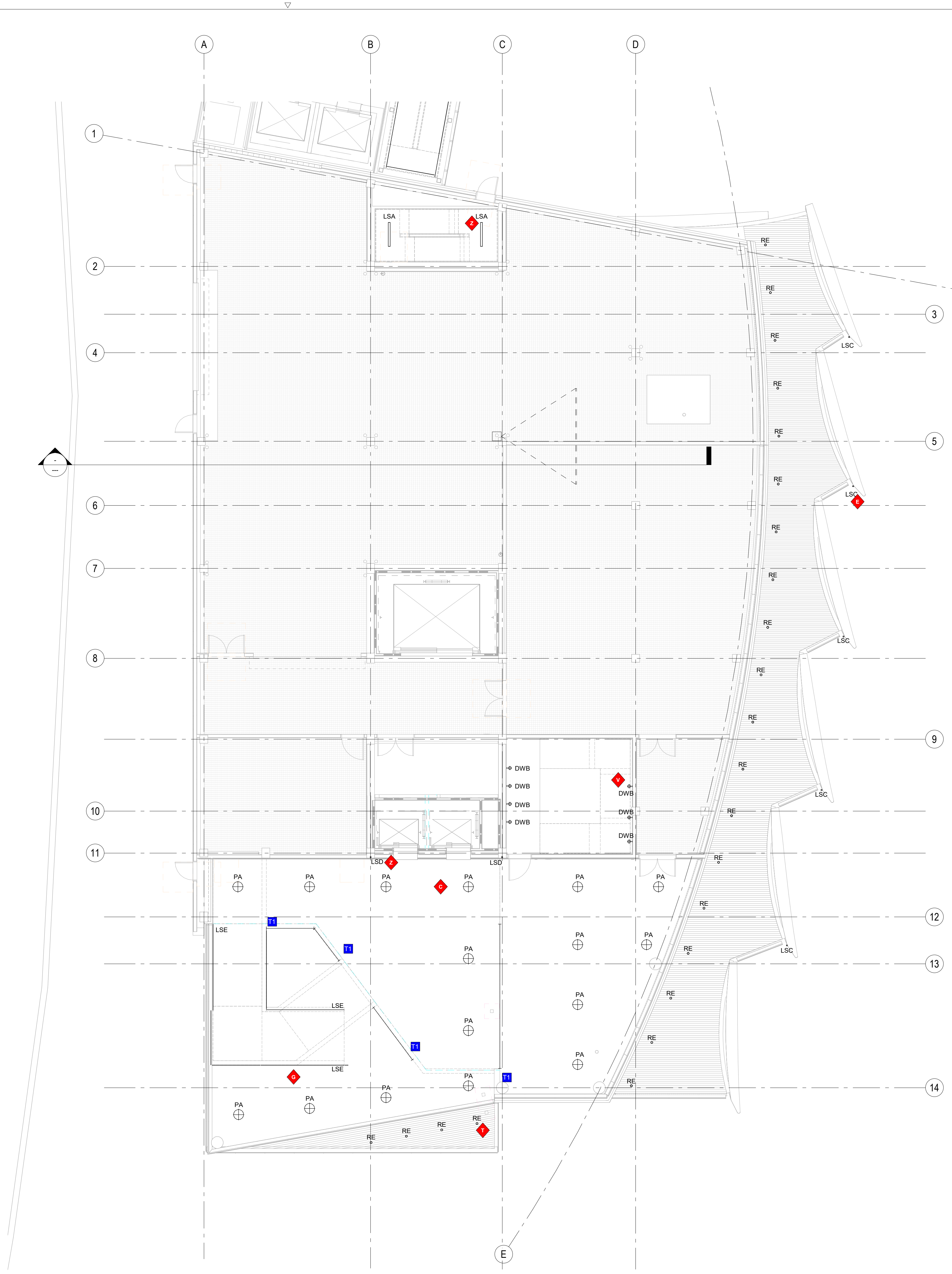
These drawings and all the ideas, arrangements, designs & plans indicated thereon or represented thereby are owned by and remain the property of Available Light and have been created and developed for use on and in connection with the specified project. Neither this drawing, nor any such ideas, arrangements, designs or plans shall be appropriated by or disclosed to any person, firm or corporation for any use or purpose whatsoever, except by the specific and written permission of Available Light.

These drawings represent visual concepts and suggestions only. Please rigidly observe all local electrical, structural and safety processes and codes. Available Light is unqualified to determine structural, electrical or safety appropriateness and will NOT assume responsibility or liability for improper engineering, construction or handling of these design concepts.

**Notes:**

◆ Lettered notes for this sheet only ◆

- AA LED tape mounted in vertical channel to illuminate the elevator front. (Type LSD) Typical.
- C Pendant mounted downlights for general illumination mounted at approximately 12'-0" AFF. (Type PA) Typical.
- G 0.63" Diameter stair step light mounted into handrail. (Type LSE) Typical.
- T 4" Diameter recessed downlight with damp location rating. (Type RE) Typical.
- Z 4" long Linear surface-mount fixture to illuminate stairwell. (Type LSA) Typical.



1 LEVEL 0 Lighting Layout  
 1/8" = 1'-0"

**Architect**  
 Payette Associates Inc.  
 290 Congress Street, Fifth Floor  
 Boston, MA 02210-1005  
 Tel: 617-895-1000  
 Fax: 617-895-1002

**Landscaper**  
 Payette Associates, Inc.  
 290 Congress St  
 Fifth Floor  
 Boston, MA 02210  
 Tel: 617-895-1000

**Civil Engineer**  
 Milone & MacBroom  
 1656, 99 Realty Dr  
 Cheshire, CT 06410  
 Tel: 203-271-1773

**MEP/FP Engineer**  
 BuroHappold  
 11 Beacon St, Ste 400  
 Boston, MA 01970  
 Tel: 617-419-2284

**Structural Engineer**  
 Silman  
 111 Devonshire St  
 Boston, MA 02109  
 Tel: 617-695-6700

**Lighting**  
 Available Light  
 10 Derby Square # 3  
 Salem, MA 01970  
 Tel: 978-744-6800

**Acoustic / AV**  
 Acentech  
 33 Moulton Street  
 Cambridge, MA 02138  
 Tel: 617-499-8000

**Elevator**  
 Lerch Bates  
 303 Wyman Street  
 Suite 300  
 Waltham, MA 02451  
 Tel: 617-763-5822

**Envelope**  
 Front  
 20 Jay Street #920  
 Brooklyn, NY 11201  
 Tel: 212-242-2253

**Wind / Air Quality**  
 RWDI  
 600 Southgate Drive,  
 Guelph  
 Ontario, Canada N1G  
 4P6  
 Tel: 1-519-823-1311

11/02/18 DESIGN DEVELOPMENT

#	DATE	DESCRIPTION

**NATIONAL COAST  
 GUARD MUSEUM**

**DESIGN DEVELOPMENT**

**LEVEL 1 LIGHTING LAYOUT**

Drawing Scale	As indicated
Project Number	16201.00
Date Issued	11/02/18

**AL001**

**General Notes:**

- See Architectural drawings for all mounting details and corresponding specifications. Lighting fixture manufacturer to approve mounting details prior to final order.
- Contractor shall verify that all lighting equipment specified - in its application on this project - complies with all applicable national and local codes, ordinances, regulations and jurisdictions prior to ordering any equipment.
- Do not scale electrical drawing for exact location of the lighting fixtures. In general, the architectural reflected ceiling plans indicate the proper location of lighting fixtures.
- Written dimensions on drawings shall have authority over scaled measurements. Contractors and manufacturers shall verify and be responsible for all dimensions and conditions on the job and inform Available Light of all variations from drawings prior to performing the work.
- All 40mm schedule 40 black steel pipe must be permanently secured so that no deflection or rotation occurs when fixtures are mounted at varying angles.
- All units must be permanently secured so that no deflection or rotation occurs when fixtures are mounted at varying angles.
- All C-clamp and unsuit mounted light fixtures will employ safety cables supplied by the appropriate fixture manufacturer.
- For all remote location dimmers, the electrical contractor shall provide separate neutrals for each dimming circuit (i.e. no common neutrals).
- A line item price for the cost to provide and install each lighting fixture type is required.

All public elevators with integral circulation light to deliver no less than 100 lux across each tread. See elevator manufacturer detail drawings.

All public elevators with integral circulation light to deliver no less than 100 lux across floor of cab. See elevator manufacturer detail drawings.

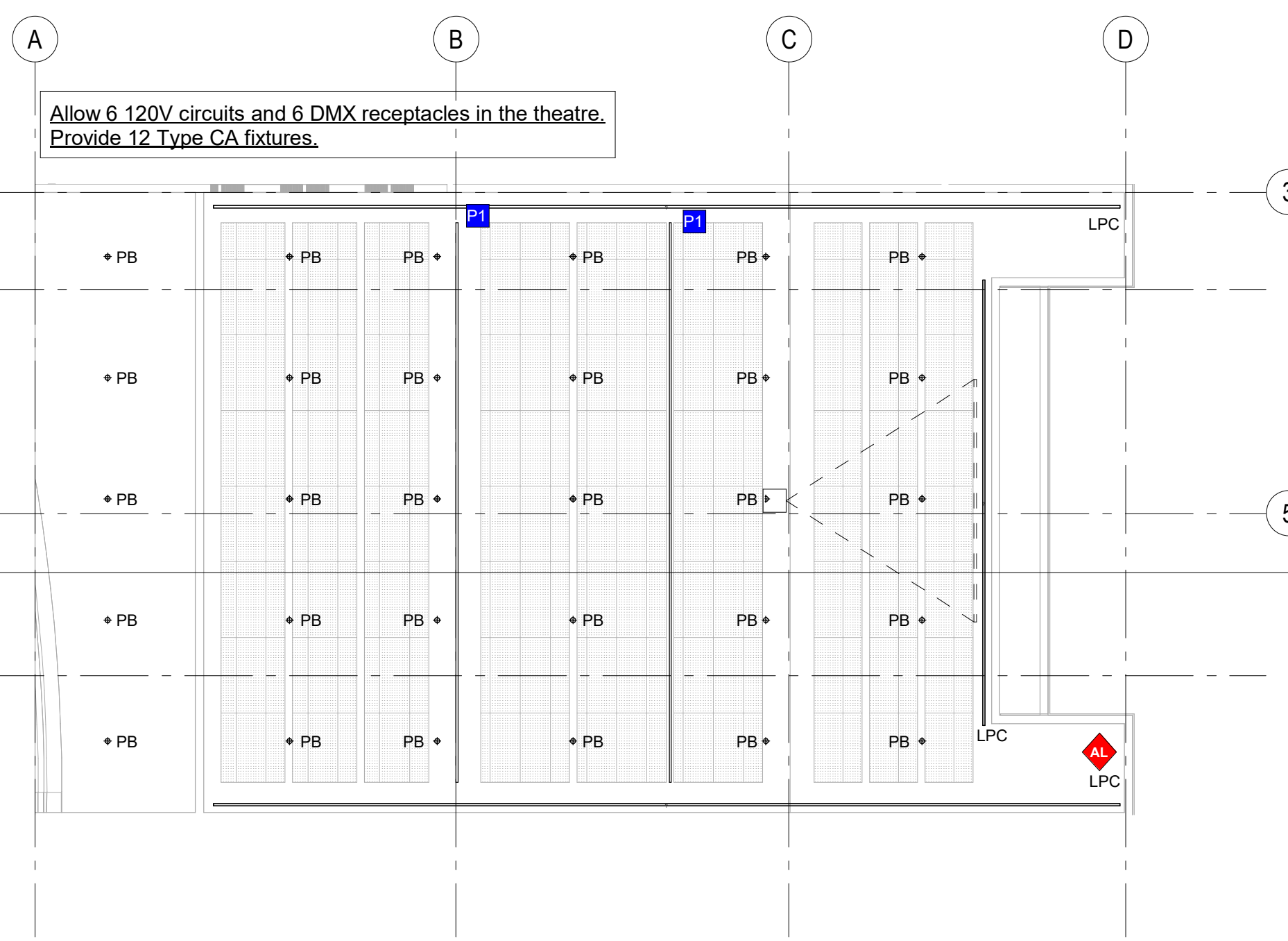
These drawings and all the ideas, arrangements, designs & plans indicated thereon or represented thereby are owned by and remain the property of Available Light and have been created and developed for use on and in connection with the specified project. Neither this drawing, nor any such ideas, arrangements, designs or plans shall be appropriated by or disclosed to any person, firm or corporation for any use or purpose whatsoever, except by the specific and written permission of Available Light.

These drawings represent visual concepts and suggestions only. Please rigidly observe all local electrical, structural and safety procedures and codes. Available Light is unqualified to determine structural, electrical or safety appropriateness and will NOT assume responsibility or liability for improper engineering, construction or handling of these design concepts.

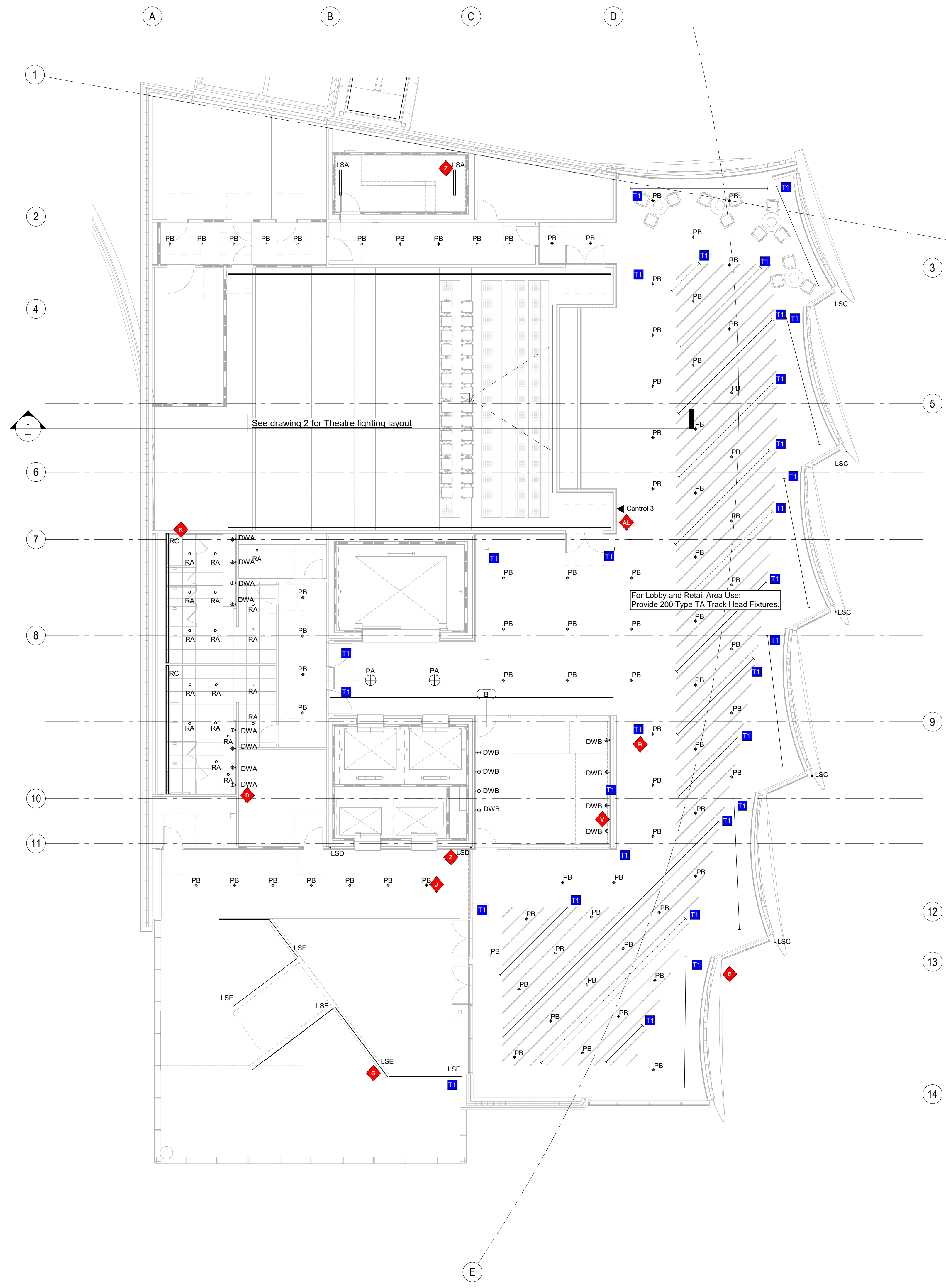
**Notes:**

◆ Lettered notes for this sheet only ◆

- AA LED tape mounted in vertical channel to illuminate the elevator front. (Type LSD) Typical.
- AC 1-1/2" Diameter (outer) Schedule 40 steel pipe theatrical lighting position with automatic hoist and control. (Type P1)
- AL Qty of 2 DMX Splitters with 8 outputs per Control 3. (Type Control 3) Typical per floor.
- AM 2" Wide pendant linear wall grazer mounted from the ceiling. (Type LPC) Typical.
- B Pendant mounted data control track suspended from the ceiling at 12'-0" AFF. (Type T1) Typical.
- D Wall mounted decorative sconces. (Type DWA) Typical.
- E 2.5" Wide surface mounted linear line of light illuminating the sail of the exterior. (Type LSC) Typical.
- G 0.63" Diameter stair step light mounted into handrail. (Type LSE) Typical.
- J 3" Diameter x 10" tall pendant mounted downlights for corridor lighting. (Type PB) Typical.
- K 3.5" Wide recessed mounted linear perimeter light (Type RC) Typical.
- V Wall mounted bulkhead fixture mounted on stairwell walls. (Type DWB) Typical.
- Z 4" long Linear surface-mount fixture to illuminate stairwell. (Type LSA) Typical.



2 Theatre Lighting Layout  
 1/8" = 1'-0"



1 LEVEL 1 Lighting Layout  
 1/8" = 1'-0"



# PAYETTE

**Architect**  
 Payette Associates Inc.  
 290 Congress Street, Fifth Floor  
 Boston, MA 02210-1005  
 Tel: 617-895-1000  
 Fax: 617-895-1002

**Landscapes**  
 Payette Associates, Inc.  
 290 Congress St  
 Fifth Floor  
 Boston, MA 02210  
 Tel: 617-895-1000

**Civil Engineer**  
 Milone & MacBroom  
 1656, 99 Realty Dr  
 Cheshire, CT 06410  
 Tel: 203-271-1773

**MEP/FP Engineer**  
 BuroHappold  
 11 Beacon St, Ste 400  
 Boston, MA 02108  
 Tel: 617-419-2284

**Structural Engineer**  
 Silman  
 111 Devonshire St  
 Boston, MA 02109  
 Tel: 617-695-6700

**Lighting**  
 Available Light  
 10 Derby Square # 3  
 Salem, MA 01970  
 Tel: 978-744-6800

**Acoustic / AV**  
 Acentech  
 33 Moulton Street  
 Cambridge, MA 02138  
 Tel: 617-499-8000

**Elevator**  
 Lerch Bates  
 303 Wyman Street  
 Suite 300  
 Waltham, MA 02451  
 Tel: 617-763-5822

**Envelope**  
 Front  
 20 Jay Street #920  
 Brooklyn, NY 11201  
 Tel: 212-242-2253

**Wind / Air Quality**  
 RWDI  
 600 Southgate Drive,  
 Guilford  
 Ontario, Canada N1G  
 4P6  
 Tel: 1-519-823-1311

#	DATE	DESCRIPTION
11/02/18	DESIGN DEVELOPMENT	

## NATIONAL COAST GUARD MUSEUM

### DESIGN DEVELOPMENT

### LEVEL 2 LIGHTING LAYOUT

Drawing Scale	As indicated
Project Number	16201.00
Date Issued	11/02/18

# AL002

#### General Notes:

- See Architectural drawings for all mounting details and corresponding specifications. Lighting fixture manufacturer to approve mounting details prior to final order.
- Contractor shall verify that all lighting equipment specified - in its application on this project - complies with all applicable national and local codes, ordinances, regulations and jurisdictions prior to ordering any equipment.
- Do not scale electrical drawing for exact location of the lighting fixtures. In general, the architectural reflected ceiling plans indicate the proper location of lighting fixtures.
- Written dimensions on drawings shall have authority over scaled measurements. Contractors and manufacturers shall verify and be responsible for all dimensions and conditions on the job and inform Available Light of all variations from drawings prior to performing the work.
- All 40mm schedule 40 black steel pipe must be permanently secured so that no deflection or rotation occurs when fixtures are mounted at varying angles.
- All unistrut must be permanently secured so that no deflection or rotation occurs when fixtures are mounted at varying angles.
- All C-clamp and unistrut mounted light fixtures will employ safety cables supplied by the appropriate fixture manufacturer.
- For all remote location dimmers, the electrical contractor shall provide separate neutrals for each dimming circuit (i.e. no common neutrals).
- A line item price for the cost to provide and install each lighting fixture type is required.

All public escalators with integral circulation light to deliver no less than 100 lux across floor of cab. See escalator manufacturer detail drawings.

All public elevators with integral circulation light to deliver no less than 100 lux across floor of cab. See elevator manufacturer detail drawings.

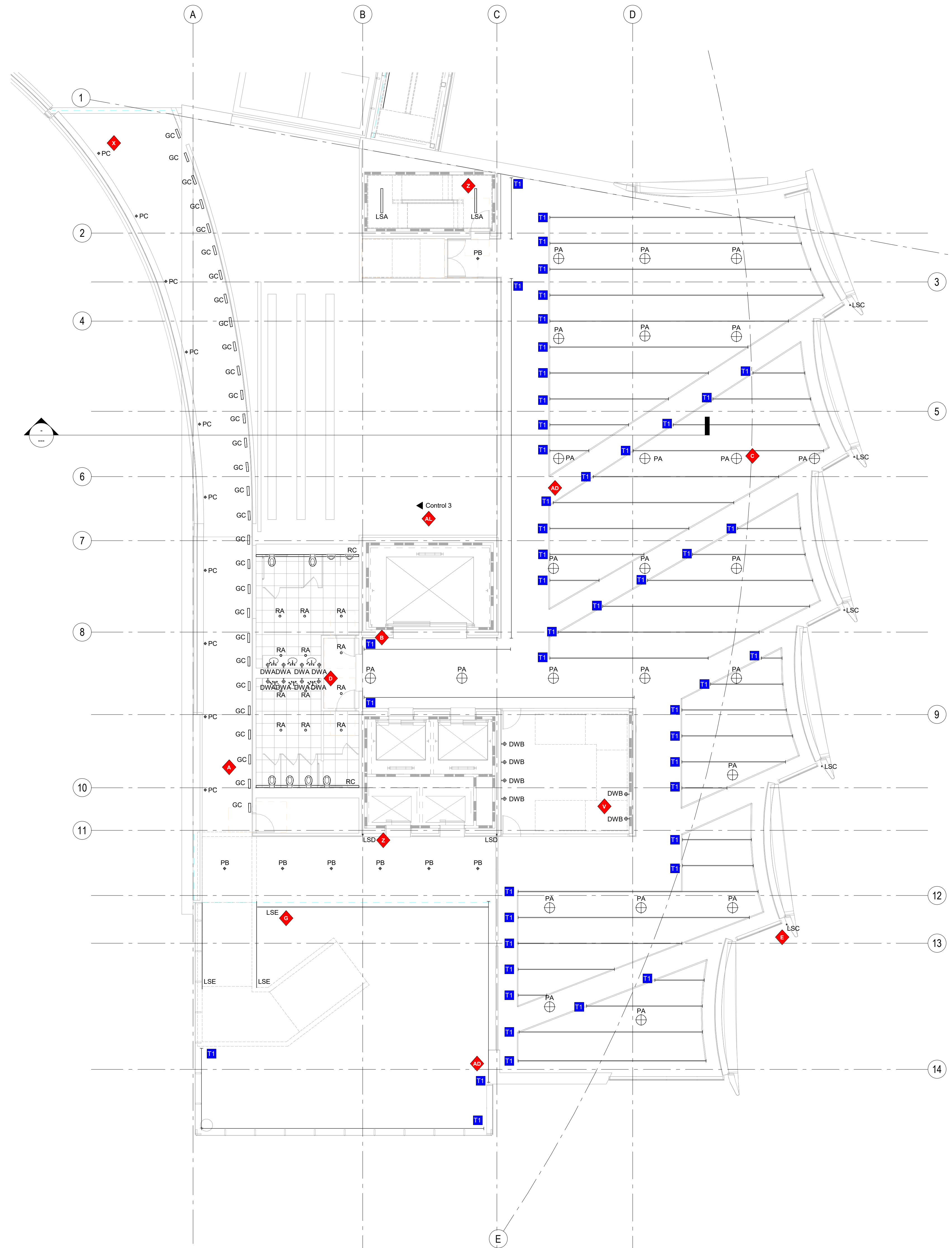
These drawings and all the ideas, arrangements, designs & plans indicated thereon or represented thereby are owned by and remain the property of Available Light and have been created and developed for use on and in connection with the specified project. Neither this drawing, nor any such ideas, arrangements, designs or plans shall be appropriated by or disclosed to any person, firm or corporation for any use or purpose whatsoever, except by the specific and written permission of Available Light.

These drawings represent visual concepts and suggestions only. Please rigidly observe all local electrical, structural and safety procedures and codes. Available Light is unqualified to determine structural, electrical or safety appropriateness and will NOT assume responsibility or liability for improper engineering, construction or handling of these design concepts.

#### Notes:

#### ◆ Lettered notes for this sheet only ◆

- A 12" Recessed in-grade linear wall washers mounted into floor. (Type GC) Typical.
- AA LED tape mounted in vertical channel to illuminate the elevator front. (Type LSD) Typical.
- AD Surface mounted data control track mounted to unistrut. (Type T1) Typical.
- AL Qty of 2 DMX Splitters with 8 outputs per Control 3. (Type Control 3) Typical per floor.
- B Pendant mounted data control track suspended from the ceiling at 12'-0" AFF. (Type T1) Typical.
- C Pendant mounted downlights for general illumination mounted at approximately 12'-0" AFF. (Type PA) Typical.
- D Wall mounted decorative sconces. (Type DWA) Typical.
- E 2.5" Wide surface mounted linear line of light illuminating the sill of the exterior. (Type LSE) Typical.
- G 1.5" Diameter stair step light mounted into handrail. (Type LSE) Typical.
- V Wall mounted bulkhead fixture mounted on stairwell walls. (Type DWB) Typical.
- X 4" Diameter surface mounted downlight. (Type PC) Typical.
- Z 4" long Linear surface-mount fixture to illuminate stairwell. (Type LSA) Typical.



1 LEVEL 2 Lighting Layout  
 1/8" = 1'-0"

# PAYETTE

**Architect**  
Payette Associates Inc.  
290 Congress Street, Fifth Floor  
Boston, MA 02210-1005  
Tel: 617-895-1000  
Fax: 617-895-1002

**Landscaper**  
Payette Associates, Inc.  
290 Congress St  
Fifth Floor  
Boston, MA 02210  
Tel: 617-895-1000

**Civil Engineer**  
Milone & MacBroom  
1656, 99 Realty Dr  
Cheshire, CT 06410  
Tel: 203-271-1773

**MEP/FP Engineer**  
BuroHappold  
11 Beacon St, Ste 400  
Boston, MA 02108  
Tel: 617-419-2284

**Structural Engineer**  
Silman  
111 Devonshire St  
Boston, MA 02109  
Tel: 617-695-6700

**Lighting**  
Available Light  
10 Derby Square # 3  
Salem, MA 01970  
Tel: 978-744-6800

**Acoustic / AV**  
Acentech  
33 Moulton Street  
Cambridge, MA 02138  
Tel: 617-499-8000

**Elevator**  
Lerch Bates  
303 Wyman Street  
Suite 300  
Waltham, MA 02451  
Tel: 617-763-5822

**Envelope**  
Front  
20 Jay Street #920  
Brooklyn, NY 11201  
Tel: 212-242-2253

**Wind / Air Quality**  
RWDI  
600 Southgate Drive,  
Guelph  
Ontario, Canada N1G  
4P6  
Tel: 1-519-823-1311

#	DATE	DESCRIPTION
11/02/18	DESIGN DEVELOPMENT	

## NATIONAL COAST GUARD MUSEUM

### DESIGN DEVELOPMENT

### LEVEL 3 LIGHTING LAYOUT

Drawing Scale  
As indicated

Project Number  
16201.00

Date Issued  
11/02/18

# AL003

- General Notes:**
- See Architectural drawings for all mounting details and corresponding specifications. Lighting fixture manufacturer to approve mounting details prior to final order.
  - Contractor shall verify that all lighting equipment specified, in its application on this project, complies with all applicable national and local codes, ordinances, regulations and jurisdictions prior to ordering any equipment.
  - Do not scale electrical drawing for exact location of the lighting fixtures. In general, the architectural reflected ceiling plans indicate the proper location of lighting fixtures.
  - Where dimensions on drawings shall have authority over scaled measurements. Contractors and manufacturers shall verify and be responsible for all dimensions and conditions on the job and inform Available Light of all variations from drawings prior to performing the work.
  - All 40mm schedule 40 black steel pipe must be permanently secured so that no deflection or rotation occurs when fixtures are mounted at varying angles.
  - All upright must be permanently secured so that no deflection or rotation occurs when fixtures are mounted at varying angles.
  - All C-clamp and upright mounted light fixtures will employ safety cables supplied by the appropriate fixture manufacturer.
  - For all remote location dimmers, the electrical contractor shall provide separate neutrals for each dimming circuit (i.e. no common neutrals).
  - A line item price for the cost to provide and install each lighting fixture type is required.

All public escalators with integral circulation light to deliver no less than 100 lux across each tread. See escalator manufacturer detail drawings.

All public elevators with integral circulation light to deliver no less than 100 lux across floor of cab. See elevator manufacturer detail drawings.

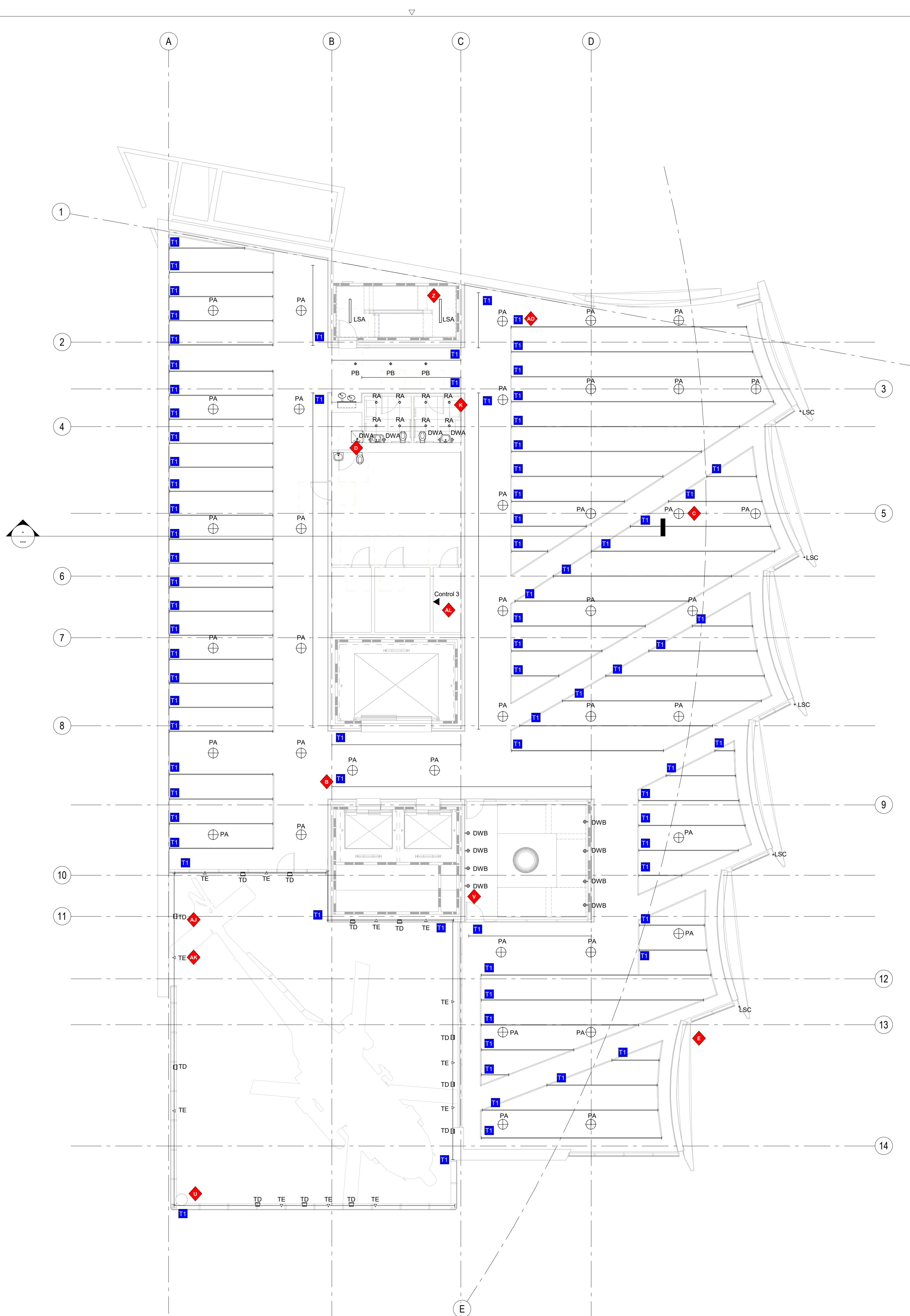
These drawings and all the ideas, arrangements, designs & plans indicated thereon or represented thereby are owned by and remain the property of Available Light and have been created and developed for use on and in connection with the specified project. Neither this drawing, nor any such ideas, arrangements, designs or plans shall be appropriated by or disclosed to any person, firm or corporation for any use or purpose whatsoever, except by the specific and written permission of Available Light.

These drawings represent visual concepts and suggestions only. Please rigidly observe all local electrical, structural and safety procedures and codes. Available Light is unqualified to determine structural, electrical or safety appropriateness and will NOT assume responsibility or liability for improper engineering, construction or handling of these design concepts.

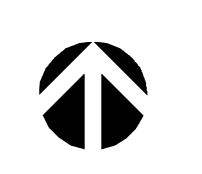
**Notes:**

**◆ Lettered notes for this sheet only ◆**

- AD Surface mounted data control track mounted to upright. (Type T1) Typical.
- AJ Track-mounted wash fixture to accent the helicopter. (Type TD) Typical.
- AK Track-mounted framing projector for helicopter lighting. (Type TE) Typical.
- AL Qty of 2 DMX Splitters with 8 outputs per Control 3. (Type Control 3) Typical per floor.
- B Pendant mounted data control track suspended from the ceiling at 12'-0" AFF. (Type T1) Typical.
- C Pendant mounted downlights for general illumination mounted at approximately 12'-0" AFF. (Type PA) Typical.
- D Wall mounted decorative sconces. (Type DWA) Typical.
- E 2.5" Wide surface mounted linear line of light illuminating the sail of the exterior. (Type LSA) Typical.
- K 3.5" Wide recessed mounted linear perimeter light. (Type RC) Typical.
- U Surface mounted data control track mounted to stairwell. (Type T3) Typical.
- V Wall mounted bulkhead fixture mounted on stairwell walls. (Type DWB) Typical.
- Z 4' long Linear surface-mount fixture to illuminate stairwell. (Type LSA) Typical.



1 LEVEL 3 Lighting Layout  
1/8" = 1'-0"



# PAYETTE

**Architect**  
Payette Associates Inc.  
290 Congress Street, Fifth Floor  
Boston, MA 02210-1005  
Tel: 617-895-1000  
Fax: 617-895-1002

**Landscaper**  
Payette Associates, Inc.  
290 Congress St  
Fifth Floor  
Boston, MA 02210  
Tel: 617-895-1000

**Civil Engineer**  
Mitone & MacBroom  
1656, 99 Realty Dr  
Cheshire, CT 06410  
Tel: 203-271-1773

**MEP/FP Engineer**  
BuroHappold  
11 Beacon St, Ste 400  
Boston, MA 02108  
Tel: 617-419-2284

**Structural Engineer**  
Silman  
111 Devonshire St  
Boston, MA 02109  
Tel: 617-695-6700

**Lighting**  
Available Light  
10 Derby Square # 3  
Salem, MA 01970  
Tel: 978-744-6800

**Acoustic / AV**  
Acentech  
33 Moulton Street  
Cambridge, MA 02138  
Tel: 617-499-8000

**Elevator**  
Lerch Bates  
303 Wyman Street  
Suite 300  
Waltham, MA 02451  
Tel: 617-763-5822

**Envelope**  
Front  
20 Jay Street #920  
Brooklyn, NY 11201  
Tel: 212-242-2253

**Wind / Air Quality**  
RWDI  
600 Southgate Drive,  
Guelph  
Ontario, Canada N1G  
4P6  
Tel: 1-519-823-1311

#	DATE	DESCRIPTION
11/02/18	DESIGN DEVELOPMENT	

## NATIONAL COAST GUARD MUSEUM

DESIGN DEVELOPMENT

### LEVEL 4 LIGHTING LAYOUT

Drawing Scale	As indicated
Project Number	16201.00
Date Issued	11/02/18

# AL004

#### General Notes:

- See Architectural drawings for all mounting details and corresponding specifications. Lighting fixture manufacturer to approve mounting details prior to final order.
- Contractor shall verify that all lighting equipment specified - in its application on this project - complies with all applicable national and local codes, ordinances, regulations and jurisdictions prior to ordering any equipment.
- Do not scale electrical drawings for exact location of the lighting fixtures. In general, the architectural reflected ceiling plans indicate the proper location of lighting fixtures.
- Written dimensions on drawings shall have authority over scaled measurements. Contractors and manufacturers shall verify and be responsible for all dimensions and conditions on the job and inform Available Light of all variations from drawings prior to performing the work.
- All 40mm schedule 40 black steel pipe must be permanently secured so that no deflection or rotation occurs when fixtures are mounted at varying angles.
- All unistrut must be permanently secured so that no deflection or rotation occurs when fixtures are mounted at varying angles.
- All C-clamp and unistrut mounted light fixtures will employ safety cables supplied by the appropriate fixture manufacturer.
- For all remote location dimmers, the electrical contractor shall provide separate neutrals for each dimming circuit (i.e. no common neutrals).
- A line item price for the cost to provide and install each lighting fixture type is required.

All public escalators with integral circulation light to deliver no less than 100 lux across each tread. See escalator manufacturer detail drawings.

All public elevators with integral circulation light to deliver no less than 100 lux across floor of cab. See elevator manufacturer detail drawings.

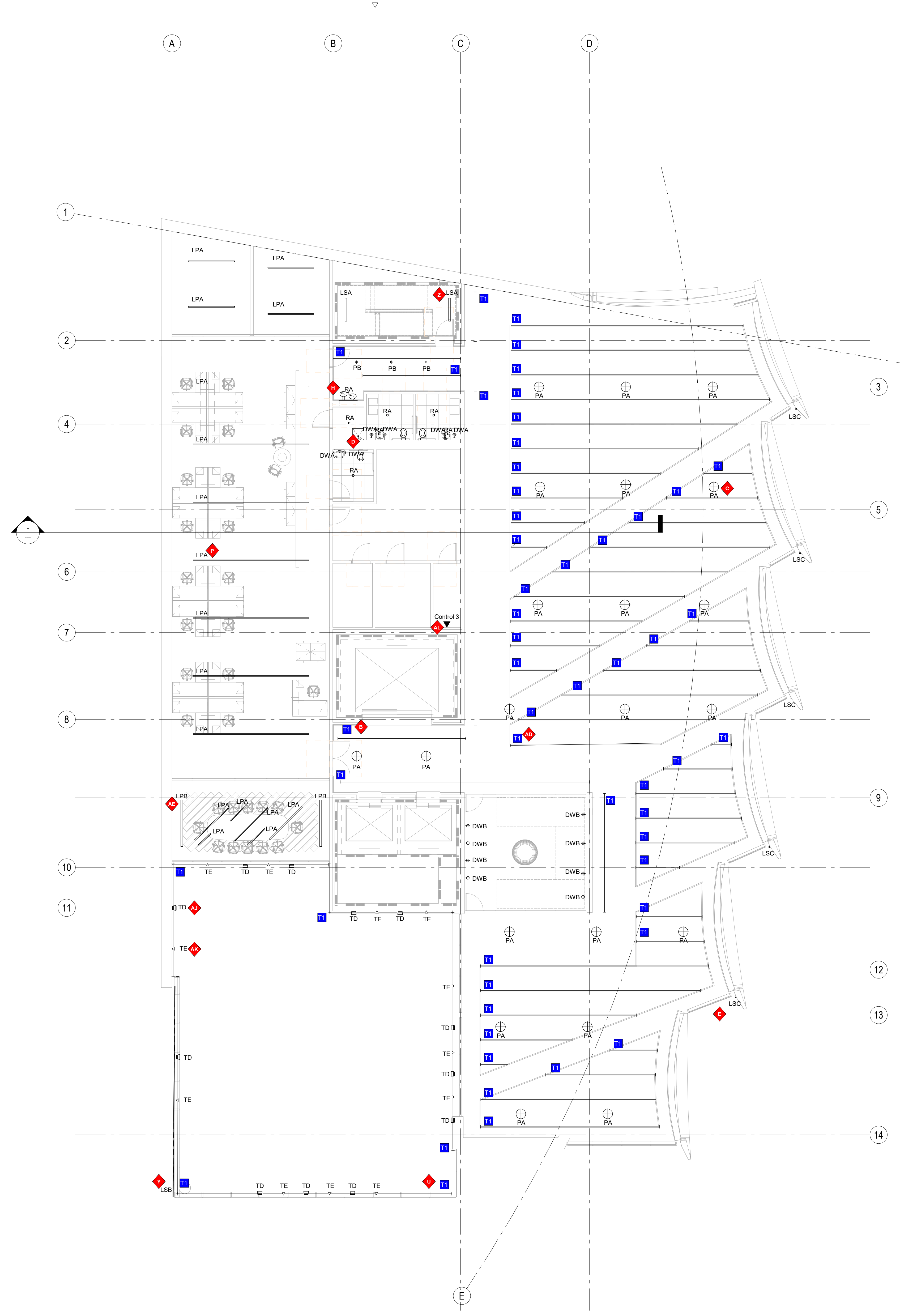
These drawings and all the ideas, arrangements, designs & plans indicated thereon or represented thereby are owned by and remain the property of Available Light and have been created and developed for use on and in connection with the specified project. Neither this drawing, nor any such ideas, arrangements, designs or plans shall be appropriated by or disclosed to any person, firm or corporation for any use or purpose whatsoever, except by the specific and written permission of Available Light.

These drawings represent visual concepts and suggestions only. Please rigidly observe all local electrical, structural and safety procedures and codes. Available Light is unqualified to determine structural, electrical or safety appropriateness and will NOT assume responsibility or liability for improper engineering, construction or handling of these design concepts.

#### Notes:

◆ Lettered notes for this sheet only ◆

- AD Surface mounted data control track mounted to unistrut. (Type T1) Typical.
- AE 8' long x 4" wide pendant mount wall washer. (Type LPB) Typical.
- AJ Track-mounted wash fixture to accent the helicopter. (Type TD) Typical.
- AK Track-mounted framing projector for helicopter lighting. (Type TE) Typical.
- AL Qty of 2 DMX Splitters with 8 outputs per Control 3. (Type Control 3) Typical per floor.
- B Pendant mounted data control track suspended from the ceiling at 12'-0" AFF. (Type T1) Typical.
- C Pendant mounted downlights for general illumination mounted at approximately 12'-0" AFF. (Type PA) Typical.
- D Wall mounted decorative sconces. (Type DWA) Typical.
- E 2.5" wide surface mounted linear line of light illuminating the seal of the exterior. (Type LSC) Typical.
- H 4" Diameter recessed downlight. (Type RA) Typical.
- P 2" wide linear pendant direct/indirect fixture (Type LPA) Typical.
- U Surface mounted data control track mounted to stairwell. (Type T3) Typical.
- Y Halo of light to silhouette the letters of the museum sign. (Type LSB) Typical.
- Z 4' long Linear surface-mount fixture to illuminate stairwell. (Type LSA) Typical.



1 LEVEL 4 Lighting Layout  
1/8" = 1'-0"

# PAYETTE

**Architect**  
Payette Associates Inc.  
290 Congress Street, Fifth Floor  
Boston, MA 02210-1005  
Tel: 617-895-1000  
Fax: 617-895-1002

**Landscaper**  
Payette Associates, Inc.  
290 Congress St  
Fifth Floor  
Boston, MA 02210  
Tel: 617-895-1000

**Civil Engineer**  
Mitone & MacBroom  
1656, 99 Realty Dr  
Cheshire, CT 06410  
Tel: 203-271-1773

**MEP/FP Engineer**  
BuroHappold  
11 Beacon St, Ste 400  
Boston, MA 02108  
Tel: 617-419-2284

**Structural Engineer**  
Silman  
111 Devonshire St  
Boston, MA 02109  
Tel: 617-695-6700

**Lighting**  
Available Light  
10 Derby Square # 3  
Salem, MA 01970  
Tel: 978-744-6800

**Acoustic / AV**  
Acentech  
33 Moulton Street  
Cambridge, MA 02138  
Tel: 617-499-8000

**Elevator**  
Lerch Bates  
303 Wyman Street  
Suite 300  
Waltham, MA 02451  
Tel: 617-763-5822

**Envelope**  
Front  
20 Jay Street #920  
Brooklyn, NY 11201  
Tel: 212-242-2253

**Wind / Air Quality**  
RWDI  
600 Southgate Drive,  
Guelph  
Ontario, Canada N1G  
4P6  
Tel: 1-519-823-1311

#	DATE	DESCRIPTION
11/02/18	DESIGN DEVELOPMENT	

## NATIONAL COAST GUARD MUSEUM

### DESIGN DEVELOPMENT

### LEVEL 5 LIGHTING LAYOUT

Drawing Scale	As indicated
Project Number	16201.00
Date Issued	11/02/18

## AL005

#### General Notes:

- See Architectural drawings for all mounting details and corresponding specifications. Lighting fixture manufacturer to approve mounting details prior to final order.
- Contractor shall verify that all lighting equipment specified in its application on this project complies with all applicable national and local codes, ordinances, regulations and jurisdictions prior to ordering any equipment.
- Do not scale electrical drawing for exact location of the lighting fixtures. In general, the architectural reflected ceiling plans indicate the proper location of lighting fixtures.
- Written dimensions on drawings shall have authority over scaled measurements. Contractors and manufacturers shall verify and be responsible for all dimensions and conditions on the job and inform Available Light of all variations from drawings prior to performing the work.
- All 40mm schedule 40 black steel pipe must be permanently secured so that no deflection or rotation occurs when fixtures are mounted at varying angles.
- All unistrut must be permanently secured so that no deflection or rotation occurs when fixtures are mounted at varying angles.
- All C-clamp and unistrut mounted light fixtures will employ safety cables supplied by the appropriate fixture manufacturer.
- For all remote location dimmers, the electrical contractor shall provide separate neutrals for each dimming circuit (i.e. no common neutrals).
- A line item price for the cost to provide and install each lighting fixture type is required.

All public escalators with integral circulation light to deliver no less than 100 lux across each tread. See escalator manufacturer detail drawings.

All public elevators with integral circulation light to deliver no less than 100 lux across floor of cab. See elevator manufacturer detail drawings.

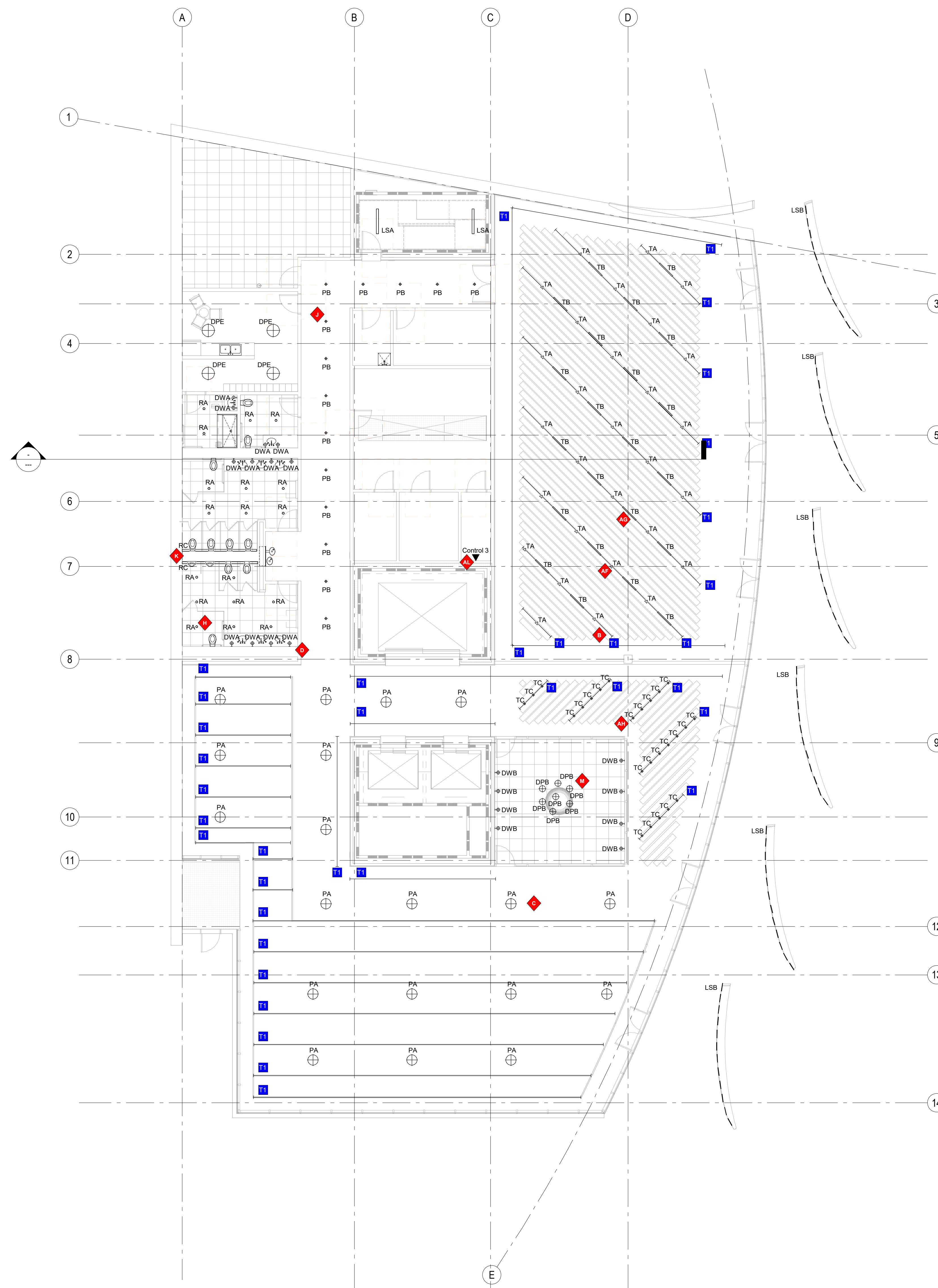
These drawings and all the ideas, arrangements, designs & plans indicated thereon or represented thereby are owned by and remain the property of Available Light and have been created and developed for use on and in connection with the specified project. Neither this drawing, nor any such ideas, arrangements, designs or plans shall be appropriated by or disclosed to any person, firm or corporation for any use or purpose whatsoever, except by the specific and written permission of Available Light.

These drawings represent visual concepts and suggestions only. Please rigidly observe all local electrical, structural and safety procedures and codes. Available Light is unqualified to determine structural, electrical or safety appropriateness and will NOT assume responsibility or liability for improper engineering, construction or handling of these design concepts.

#### Notes:

◆ Lettered notes for this sheet only ◆

- AF Track-mounted adjustable accent fixture. (Type TA) Typical.
- AG Track-mounted linear downlight fixture. (Type TB) Typical.
- AH Track-mounted decorative pendant fixture. (Type TC) Typical.
- AL Qty of 2 DMX Splitters with 8 outputs per Control 3. (Type Control 3) Typical per floor.
- B Pendant mounted data control track suspended from the ceiling at 12'-0" AFF. (Type T1) Typical.
- C Pendant mounted downlights for general illumination mounted at approximately 12'-0" AFF. (Type PA) Typical.
- D Wall mounted decorative sconces. (Type DWA) Typical.
- H 4" Diameter recessed downlight. (Type RA) Typical.
- J 3" Diameter x 10" tall pendant mounted downlights for corridor lighting. (Type PB) Typical.
- K 3.5" Wide recessed mounted linear perimeter light (Type RC) Typical.
- M Decorative pendant light fixture. (Type DPB)



1 LEVEL 5 Lighting Layout  
1/8" = 1'-0"



**Architect**  
 Payette Associates Inc.  
 290 Congress Street, Fifth Floor  
 Boston, MA 02210-1005  
 Tel: 617-895-1000  
 Fax: 617-895-1002

<b>Landscape</b> Payette Associates, Inc. 290 Congress St Fifth Floor Boston, MA 02210 Tel: 617-895-1000	<b>Civil Engineer</b> Milone & MacBroom 1656, 99 Realty Dr Cheshire, CT 06410 Tel: 203-271-1773
---	---

<b>MEP/FP Engineer</b> BuroHappold 11 Beacon St, Ste 400 Boston, MA 02108 Tel: 617-419-2284	<b>Structural Engineer</b> Silman 111 Devonshire St Boston, MA 02109 Tel: 617-695-6700
---	--

<b>Lighting</b> Available Light 10 Derby Square # 3 Salem, MA 01970 Tel: 978-744-6800	<b>Acoustic / AV</b> Acentech 33 Moulton Street Cambridge, MA 02138 Tel: 617-499-8000
---	---

<b>Elevator</b> Lerch Bates 303 Wyman Street Suite 300 Waltham, MA 02451 Tel: 617-763-5822	<b>Envelope</b> Front 20 Jay Street #920 Brooklyn, NY 11201 Tel: 212-242-2253
---	---

**Wind / Air Quality**  
 RWDI  
 600 Southgate Drive,  
 Guelph  
 Ontario, Canada N1G  
 4P6  
 Tel: 1-519-823-1311

#	DATE	DESCRIPTION
11/02/18		DESIGN DEVELOPMENT

## NATIONAL COAST GUARD MUSEUM

### DESIGN DEVELOPMENT

### SITE LIGHTING LAYOUT

Drawing Scale	As Indicated
Project Number	16201.00
Date Issued	11/02/18



# AL006

#### General Notes

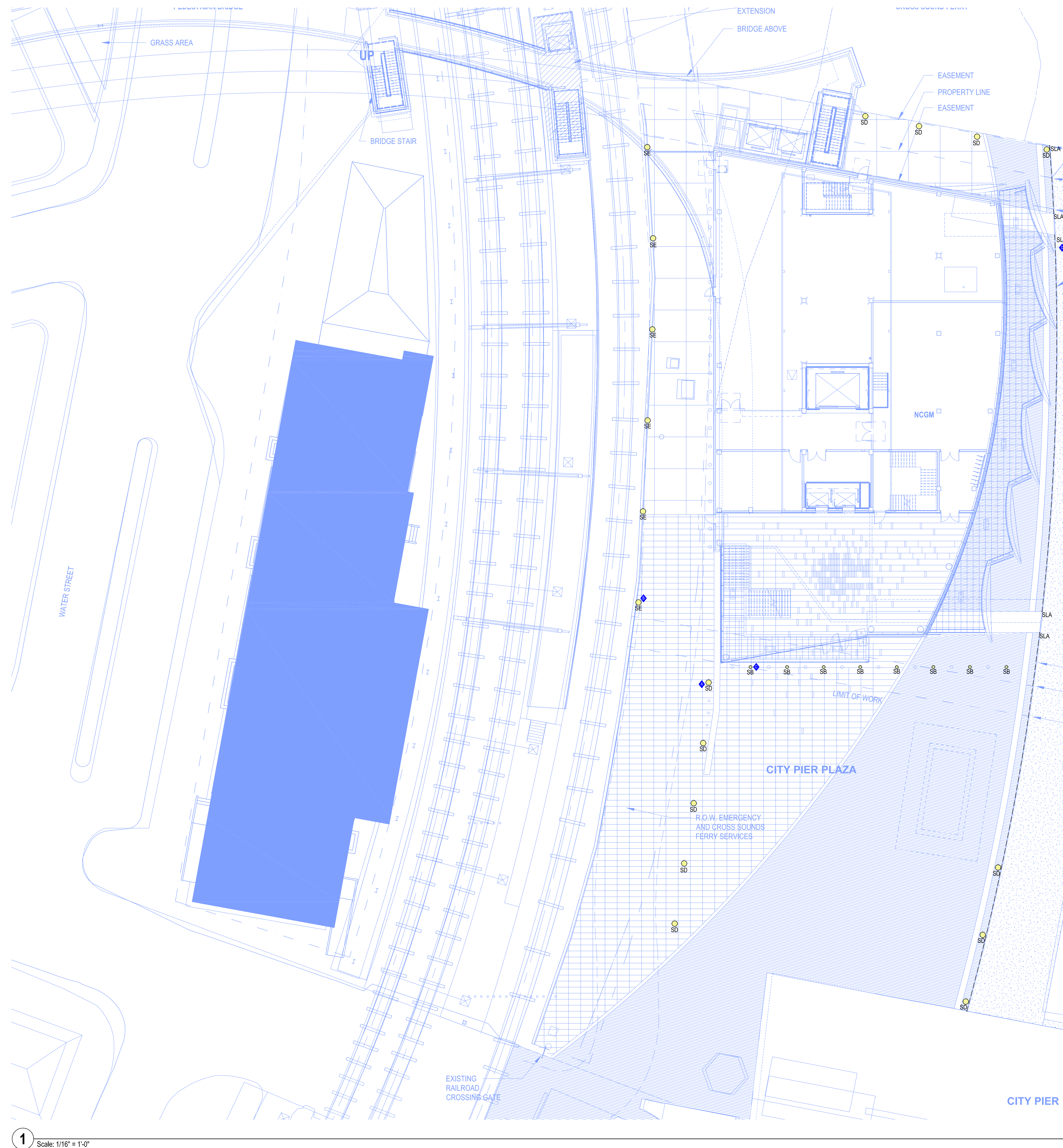
- See Architectural drawings for all mounting details and corresponding specifications. Lighting fixture manufacturer to approve mounting details prior to final order.
- Contractor shall verify that all lighting equipment specified - in its application on the project - complies with all applicable national and local codes, ordinances, regulations and jurisdictions prior to ordering any equipment.
- Do not scale electrical drawing for exact location of the lighting fixtures. In general, the architectural reflected ceiling plans indicate the proper location of lighting fixtures.
- Written dimensions on drawings shall have authority over scaled measurements. Contractors and manufacturers shall verify and be responsible for all dimensions and conditions on the job and inform Available Light of all variations from drawings prior to performing the work.
- All 1-1/2" schedule 40 black steel pipe must be permanently secured so that no deflection or rotation occurs when fixtures are mounted at varying angles.
- All unistrut must be permanently secured so that no deflection or rotation occurs when fixtures are mounted at varying angles.
- All C-clamp and unistrut mounted light fixtures will employ safety cables supplied by the appropriate fixture manufacturer.
- For all remote location dimmers, the electrical contractor shall provide separate neutrals for each dimming circuit (i.e. no common neutrals).
- A line item price for the cost to provide and install each lighting fixture type is required.

These drawings and all the ideas, arrangements, designs & plans indicated thereon or represented thereby are owned by and remain the property of Available Light and have been created and developed for use on and in connection with the specified project. Neither this drawing, nor any such ideas, arrangements, designs or plans shall be appropriated by or disclosed to any person, firm or corporation for any use or purpose whatsoever, except by the specific and written permission of Available Light.

These drawings represent visual concepts and suggestions only. Please rigidly observe all local electrical, structural and safety procedures and codes. Available Light is unqualified to determine structural, electrical or safety appropriateness and will NOT assume responsibility or liability for improper engineering, construction or handling of these design concepts.

#### Reference Notes (Specific to this page only)

- ◆ 16' tall column fixtures with asymmetric optics (Type SD) Typical.
- ◆ 20" L x 9" W x 20" H fixture mounts to 16' tall fence post. Slip-fit mounting to 3" OD tenon fitting (Type SE) Typical.
- ◆ 6-1/2" Diameter x 40" Tall bollard fixture (Type SB) Typical.
- ◆ Linear LED tape in channel with lens under bench (Type SLA) Typical.



1 Scale: 1/16" = 1'-0"

